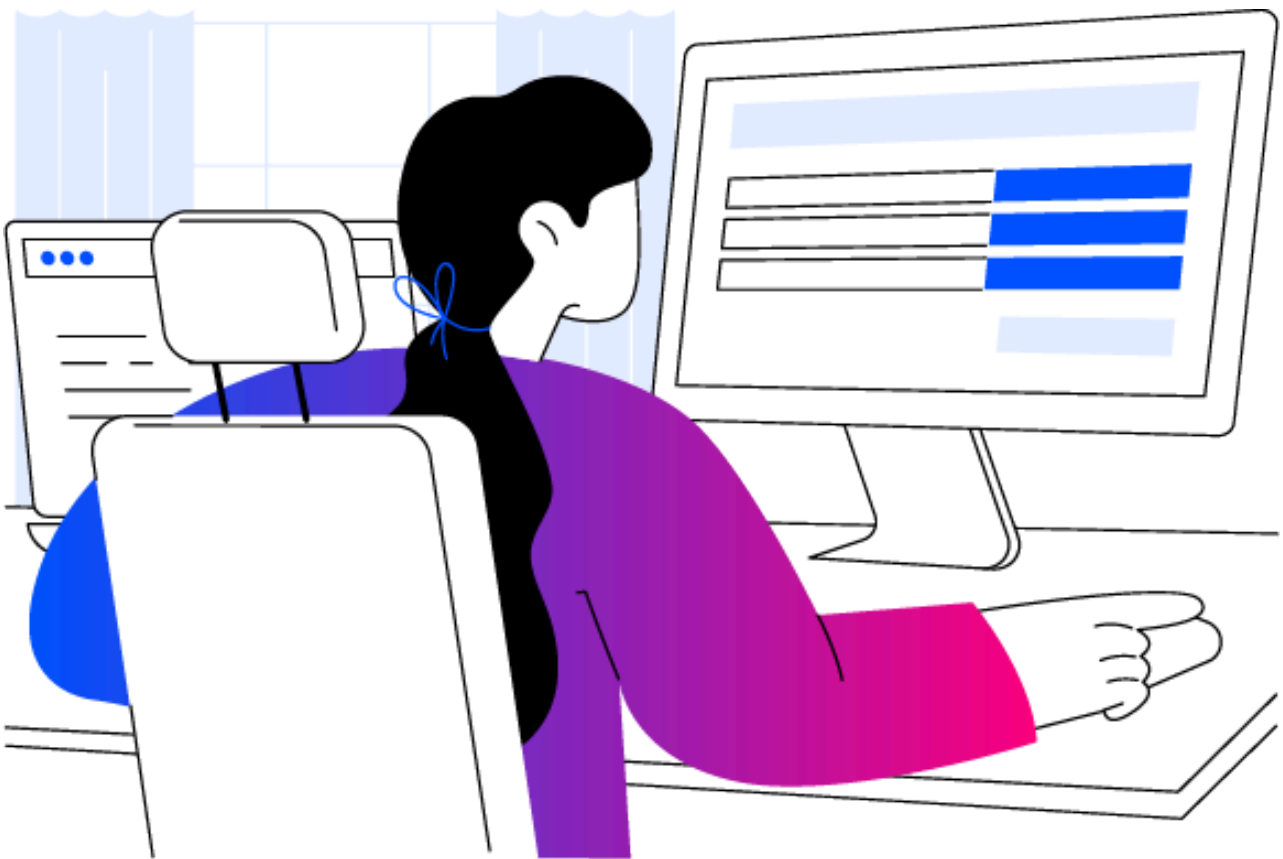


Introduction to research integrity

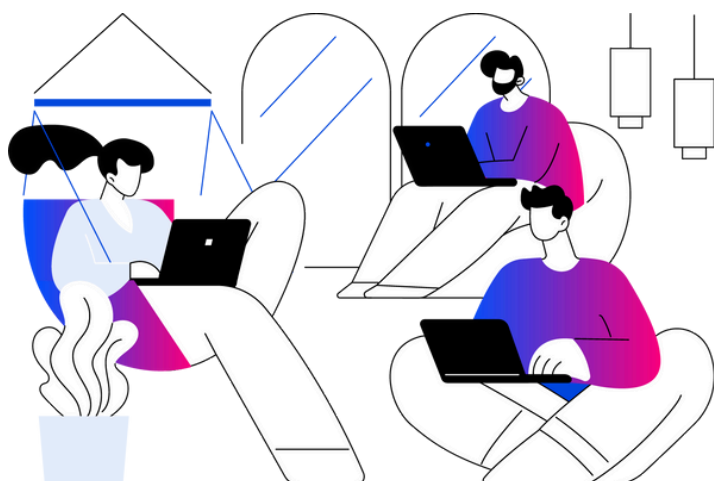
Online training course information pack



Last updated: 25/03/2025

Table of contents

| | |
|----|---|
| 03 | About the course |
| 03 | Enhanced value for subscribers at a critical time |
| 04 | Tested by professionals |
| 04 | What's new? |
| 05 | What does the course cover? |
| 05 | Who should take the course? |
| 06 | The course offer |
| 06 | How many learners can take part? |
| 06 | When can learners register? |
| 07 | How to deliver the course |
| 07 | Recommended method: URL |
| 08 | Alternative method: LMS Dispatch |
| 09 | Comparing delivery methods |
| 10 | Troubleshooting |
| 10 | Reporting |
| 11 | Terms and conditions |
| 11 | Data privacy |
| 11 | Terms of use |
| 12 | Permitted uses |
| 12 | Prohibited uses |
| 13 | How to access your places |



About the course

We are excited to introduce *Introduction to research integrity*, our **new online training course** launching for UKRIO subscribers on 21st May 2025. This four-module course offers a strong foundation in research integrity principles and practical guidance on applying them in everyday research practices.

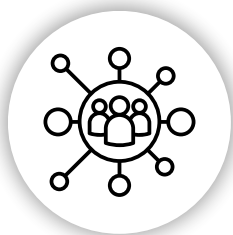


Enhanced value for subscribers at a critical time

We recognise that many of our subscribers are facing significant financial pressures, which can affect how research integrity is resourced. However, these challenges also increase the risk of poor research practices, **making support for good research practices more critical than ever.**

Research integrity training is essential for institutions to equip their staff to conduct high-quality, ethical, and effective research — and is increasingly a requirement for research funding.

To enhance our support for subscribers at a critical time, we are offering each of them **up to 1,000 free places in the course** (based on subscription tier) and discounted rates for additional enrolments. This course is the first in a series of new training materials we will be offering over the next year.



Tested by professionals

Developed through UKRIO's extensive experience supporting researchers via its Advisory Service, this course was **tested by nearly 9,000 professionals** from 100+ research organisations of various sizes and types, from specialist institutions to PSREs and Russell Group universities.

Here's what pilot participants say about the course:

92%

would 'definitely' or 'probably' recommend this course to other researchers. (n=1,435)

94%

reported the course 'exceeded expectations' or 'met expectations'. (n=1,424)

95%

reported that it was 'very easy' or 'easy' to navigate the course. (n=1,430)

Source: Feedback survey from participants in the pilot version of the training course, conducted after course completion.



What's new?

Based on feedback from the pilot, we've made **key enhancements to the course**.

New features include:

- New and refreshed design for a more user-friendly experience
- Expanded content on topics like research ethics, conflicts of interest, data management, authorship, and AI
- New multimedia and interactive elements, including videos, case studies, scenarios, and assessments
- Updated guidance on key frameworks such as the revised Concordat to Support Research Integrity
- A streamlined registration and administration process
- Improved reporting capabilities
- A communications package to help subscribers promote the course



What does the course cover?

This course will help learners apply research integrity principles to **strengthen good research practice** and enhance the integrity of their work.

Learners will gain:

- A comprehensive understanding of research integrity and how to apply its principles throughout the research process
- Knowledge of good research practices to support high-quality work and prevent questionable practices or breaches of research integrity
- Insights into organisational guidelines, governance frameworks, and available support systems
- Strategies to navigate common research integrity challenges, including research ethics, competing interests, collaborative working, data collection, authorship and AI
- Awareness of how personal and professional approaches to research integrity contribute to a strong research culture



Who should take this course?

This course is suitable for researchers at **all career stages and across disciplines**, as well as research governance professionals. It serves as a foundational course for early-career researchers and a refresher for experienced professionals.

The following audiences will benefit from this course:

- Early career researchers (PhD students, postdocs and fellows)
- Established researchers (PIs, lecturers, professors)
- Senior research leaders (PVCs, directors, heads of departments/centres)
- Research support staff (technicians, research assistants, data/project infrastructure support)
- Research governance staff (research integrity, culture, governance and ethics professionals)

The course offer



How many learners can take part?

This course is available exclusively to UKRIO subscribers, with **free enrolments based on subscription tier**:

| | |
|--------|---------------------|
| Tier 1 | 1,000 places |
| Tier 2 | 700 places |
| Tier 3 | 200 places |

Additional places can be purchased at a discounted rate of £5–£8 per enrolment, with further discounts for bulk purchases.

If you have questions about your UKRIO subscription tier, please contact your UKRIO account manager or contact info@ukrio.org.

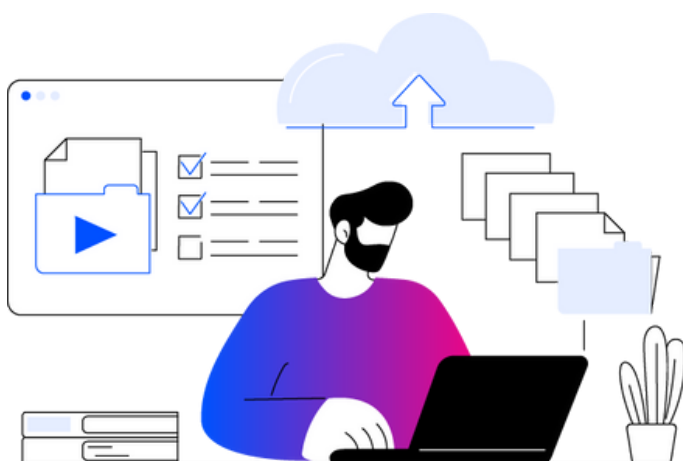
When can learners register?

In response to subscriber feedback, we are pleased to introduce a more flexible and accommodating enrolment process for this course.

Now running in 12-month cycles, access to this year's course will be available from 21st May 2025 – 21st May 2026.

Subscribers can **enrol their learners at any point during the 12-month period**, providing greater flexibility to accommodate different schedules. Access is granted immediately upon registration, ensuring a seamless and convenient learning experience.

Please note that unsubscribing from UKRIO during an active subscription period will result in the loss of access to the course.



How to deliver the course

The course is hosted in SCORM Cloud, a cloud-based platform provided by Rustici Software. Subscribers have two options for how they deliver the course to their learners: **URL** or **LMS Dispatch**.



Recommended method: URL

Each subscriber organisation will receive a **unique URL for direct course access**. Simply share this link with any learners you wish to enrol. Learners can use the link to access the course at any time and self-enrol by entering their name and organisational email.

How it works:

- A unique URL link is shared with course administrators
- Course administrators share this link with learners, who access and register on the course via their browser



Alternative method: Learning Management System (LMS) Dispatch

For organisations wishing to integrate the course with their Learning Management System (LMS), the course can be delivered via a Dispatch file (SCORM 1.2 format). This requires administrators to upload the file to their LMS and assign learners.

How it works:

1. The Dispatch file is shared with your LMS administrators
2. LMS administrators upload the course to their LMS and assign it to learners
3. Learners launch the course from the LMS to complete registration

Anonymisation via Personal identifying information (PII) hashing:

Organisations can choose to receive Dispatch files with PII hashing, enabling learners' identifying data to be replaced with random strings. If this option is chosen, learner identities cannot be linked unless configured within your LMS.

We recommend that subscribers review the [Rustici Software Security Information](#) and [UKRIO's Privacy Policy](#) to make an informed decision on data use and their preferred method of course delivery.

Comparing delivery methods

URL

| Benefits |
|--|
| <ul style="list-style-type: none"> • Immediate access without additional setup • Self-enrolment for learners • Option for manual learner registration • Easy reporting for administrators • Troubleshooting support |
| Considerations |
| <ul style="list-style-type: none"> • User identifying data (name and email) required for registration and shared with UKRIO |

LMS Dispatch

| Benefits |
|--|
| <ul style="list-style-type: none"> • Integration with your LMS • Full control over data and administration • Use of LMS reporting tools • Option to anonymise learner data |
| Considerations |
| <ul style="list-style-type: none"> • Requires a two-step registration process (admin enrolls learners; learners launch the course) • If personal identifiable information (PII) hashing is enabled, you will not be able to view learners' identifying information (name, email) in reports, unless your LMS has tools to link learners' LMS identity with PII hashing • Manual learner registration unavailable • Limited troubleshooting support |



Troubleshooting

Most technical issues can be resolved by referring to the [SCORM Cloud Technical FAQs](#), and we encourage users to check this resource first. If further assistance is needed, UKRIO can provide support at info@ukrio.org. However, please note that if you are hosting the course via the Dispatch method, our ability to assist may be limited, as many issues will depend on your organisation's LMS configuration.



Reporting

Regardless of whether you use the URL or Dispatch delivery method, you will have access to a **dashboard hosted by SCORM Cloud**. This dashboard provides basic reports on learners' course activity, including completion status and scoring statistics. Course administrators can view and download these reports via a provided URL.

If you deliver the course via Dispatch with PII hashing, individual user data will not be identifiable in the SCORM Cloud dashboard unless your LMS has built-in tools to reidentify anonymised learners. However, if using Dispatch, you may be able to utilise your available LMS tools/functionality to monitor learners' course usage.

Terms and conditions



Data and privacy

If your organisation is accessing the course via URL, you agree to follow the registration setup so that your learner personal identifiable information (email addresses and names) is shared with UKRIO.

If your organisation is accessing the course through a LMS, you have the option to choose whether to share learner data or not. If you opt to not share learner data, you agree to follow the registration setup so that your learner data is 'scrambled.' In this way, personal identifiable information (email addresses and names) will not be shared with UKRIO.

Where data is shared, you agree to the Terms of UKRIO's [Data and Privacy Policy](#). UKRIO will only hold this data for the purposes of administering and evaluating the course. All learner data will be permanently deleted when course access is no longer required or when your subscription is inactive.

Anonymised data relating to number of users, course usage, completion rate is shared with UKRIO and will be used for the purposes of evaluating the reach and impact of the online training course.

Terms of use

This course will be available from May 21, 2025, to May 20, 2026, and can be accessed while your subscription is active. Course delivery is reviewed annually, considering value for money, subscriber accessibility, and financial sustainability.

You may register only the number of learners allocated to your organisation based on your subscription tier and any additional places purchased.

Staff and learners should be informed that course materials must not be distributed or duplicated.

Permitted uses

Individuals may download and/or print such portion of the training materials solely for their own, personal (non-commercial) use, provided they do not remove any trademark, copyright or other notice from such materials.

You may want to include the following statement when sharing:

© 2025 UKRIO. All rights reserved. Redistribution beyond personal, educational use is not permitted. Requests to use materials created for any purpose other than as permitted in these terms of use should be directed to UKRIO in writing. It is in UKRIO's sole discretion to decide whether to permit such a request.

Prohibited uses

- The removal of UKRIO branding, trademarks, copyright notices, attributions, or any other notices from the materials is strictly prohibited.
- Any use of the materials for commercial purposes requires prior permission from UKRIO.
- Editing or adapting the materials before distribution is not permitted without written consent, including presenting them in a form substantially different from the original. Additionally, selling, distributing, or sublicensing the training materials to any third party is not allowed.

Individuals may not modify, copy, frame, cache, reproduce, sell, publish, transmit, display or otherwise use any portion of the training materials for any purpose not explicitly authorised by UKRIO. Individuals may not scrape or otherwise copy the training materials without permission. Data scraping is a technique where a computer program extracts data from human-readable output coming from another program.

How to access your places



If you are a UKRIO subscriber and would like to receive places in this course, please complete our registration form **by 30th April 2025**.

[Complete registration form here](#)

By completing this form, you will provide:

- Contact information for course administrators
- Preferred method of course delivery (URL or LMS Dispatch)
- Anticipated number of additional places to purchase (if applicable)
- Agreement to the course Terms and conditions

After completion of the form, UKRIO will reach out if any additional information is required to facilitate your enrolment in the course.

You can expect to receive materials to facilitate your access to the course via your chosen method of delivery (URL or LMS Dispatch) by 21 May 2025.

Please contact us at info@ukrio.org with any questions related to the course.