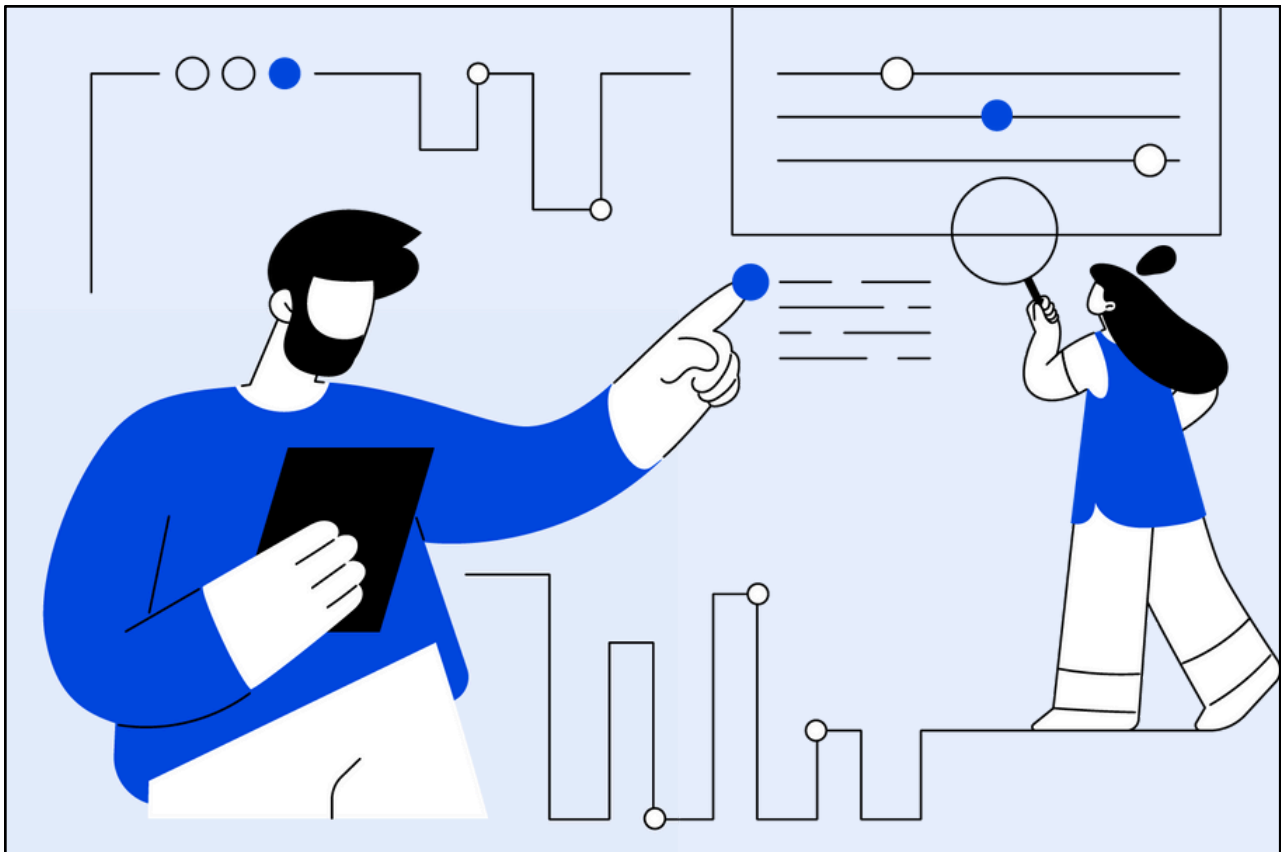


# Introduction to research integrity

Online training course

---

Learner information pack

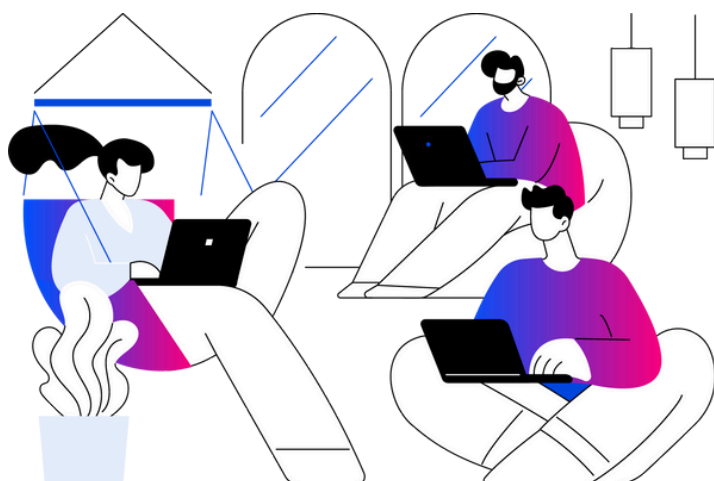


UK Research Integrity Office, Impact Hub London Euston,

1 Triton Square, NW1 3DX

[www.ukrio.org](http://www.ukrio.org) | [info@ukrio.org](mailto:info@ukrio.org)

Registered Charity No: 1147061, Registered Company No: 7444269



# About the course

UKRIO's *Introduction to Research Integrity* offers a strong foundation in research integrity principles. It offers practical guidance to help learners **navigate complex challenges** with confidence and apply integrity in their everyday research practices.

## Course highlights

The course has been shaped by extensive feedback from a cross-disciplinary, cross-sector pilot involving nearly 9,000 research professionals across more than 100 research organisations.

### **The latest version features several key updates, including:**

- A refreshed design for a more user-friendly experience
- New and updated content on topics like research ethics, conflicts of interest, data management, authorship, and AI
- Interactive elements, such as videos, case studies, real-world scenarios, and assessments
- Revised guidance aligned with key frameworks, including the updated *Concordat to Support Research Integrity* (April 2025)

## Structure and format

The course is structured into four modules, each ending with a short quiz designed to assess and reinforce your learning. To progress to the next module, you must achieve a score of at least 80%. You have unlimited attempts to pass.

Course completion time varies depending on your pace and the number of optional topics you choose in Module 3, but it typically takes 4 to 6 hours. You're welcome to work through the course at your own pace. Your progress will be saved automatically, and you will have access to the course for 12 months from 21 May 2025.

## Modules and learning objectives

The table below outlines the four course modules, including their learning objectives and estimated completion times.

### Module 1: Principles of research integrity

(60 minutes)

#### Learning objectives:

1. Explain what research integrity is and why it matters
2. Define the five principles of research integrity
3. Understand how high-quality research, personal responsibility, and professional conduct contribute to research integrity
4. Recognise the spectrum of research practice, from best practice to misconduct

## Module 2: The UK's research integrity guidelines, principles, and governance frameworks

(40 minutes)

### Learning objectives:

1. Understand the expectations for upholding research integrity in the UK
2. Identify the key requirements and recommendations that promote good research practices
3. Recognise the knowledge and skills necessary to embed research integrity into your work
4. Describe the roles and responsibilities of research integrity professionals
5. Understand when and how to report research integrity concerns and how organisations address them

## Module 3: Research integrity in practice

Module 3 includes four compulsory topics, followed by an assessment quiz. If you pass, additional optional topics will become available for you to explore based on your interests. Each will conclude with a short assessment to reinforce your learning.

### Compulsory topics:

1. Research ethics (30 minutes)
2. Data collection and management (20 minutes)
3. Open research (25 minutes)
4. Declaring competing interests (15 minutes)

### Additional topics:

1. Collaborative working (25 minutes)
2. Authorship (30 minutes)
3. AI (45 minutes)
4. Research security (30 minutes)

## **Module 4: Fostering a culture of research integrity**

(30 minutes)

### **Learning objectives:**

1. Understand how research integrity and research culture impact people, research, and society
2. Identify current challenges in our research culture and key inhibitors and enablers of integrity
3. Recognise the shared responsibilities of all research actors in supporting a positive and inclusive research culture
4. Reflect on your positionality and how reflexive practice can support research integrity
5. Identify ways to lead by example, whatever your role or career stage

# Accessing the course



You'll access the course either via a direct URL from your course administrator or through your organisation's Learning Management System (LMS). Check with your administrator to confirm which access method applies to you.

## Compatible devices

### Desktop browsers:

The course is designed for use on PC and Mac desktops or laptops with the following supported browsers:

- Microsoft Edge (PC)
- Google Chrome (PC/Mac)
- Firefox (PC/Mac)
- Safari (Mac)

For best performance, please ensure your browser is up to date, and enable cookies and pop-ups.

### Mobile devices and tablets:

We do not recommend completing the course on mobile phones or tablets, as smaller screens and limited processing power may affect functionality.

## Instructions for URL users

### Accessing the course:

- Click the course URL provided by your administrator to open it on your device.
- Bookmark the page that appears (see Figure 1) to return easily later.
- Enter your organisational email, first name, and last name, then click the green button to launch the course.

Please enter your info and we will move you right along.

Your correct email will ensure you receive proper credit for your training.

Email

First Name

Last Name

\* Your email address is your sole identification in SCORM Cloud. Please take a moment to make sure the one provided is correct. Thanks!

Ok. Now take me to my training

**Figure 1**

### Saving and exiting:

To exit, just close the browser or tab. Your progress is saved automatically. When you return, click the 'resume' button to pick up where you left off.

## Instructions for LMS users

### **Accessing the course:**

After your administrator assigns you to the course, follow their instructions to launch it from your LMS.

### **Saving and exiting:**

You can exit the course by closing or logging out of your LMS browser. Your progress will be saved, and when you return, simply click the 'resume' button to continue where you left off.

## Instructions for LMS users

### **Accessing the course:**

After your administrator assigns you to the course, follow their instructions to launch it from your LMS.

### **Saving and exiting:**

You can exit the course by closing or logging out of your LMS browser. Your progress will be saved, and when you return, simply click the 'resume' button to continue where you left off.



# Best practices for using the course

To help prevent technical issues when using the course, we recommend learners follow these good practice guidelines:

- **Close the browser when the course is not being worked on.** Leaving the course open for prolonged periods may cause progress to be lost.
- **Complete modules in a single sitting where possible,** especially quizzes and interactive components. (Module 3 may require more than one session.)
- **Use supported browsers** (see [Accessing the course](#)). Ensure browsers are up to date and allow cookies and pop-ups.
- **Use a desktop or laptop device.** The course is not optimised for mobile phones or tablets.
- **Ensure sufficient device performance:** Low memory or CPU on the user device can impact course performance.
- **Maintain a stable internet connection** throughout each session.
- **Clear browser cache and cookies** if experiencing loading issues.
- **Disable browser extensions that may interfere with course content** (e.g. JavaScript or multimedia blockers).
- **Check firewall or proxy settings** if content is not loading properly.
- **Avoid using a VPN,** as this can delay or disrupt content delivery.

To troubleshoot course issues, visit our [Technical Support](#) webpage.