



‘Working towards a practical framework for the acquisition and use of non-human materials’

Catherine McCarthy (Compliance Manager)

Wellcome Sanger Institute

Email: cm17@sanger.ac.uk

Tel: (01223) 496920



<https://www.sanger.ac.uk/>

Wellcome Sanger Institute – who are we?

Wellcome Sanger Institute, part of the wider Wellcome Genome Campus all operating under Genome Research Limited (GRL)

The Wellcome Sanger Institute is a world leader in genome research that delivers insights into human and pathogen biology that change science and medicine.

‘We use information from genome sequences to advance understanding of biology and improve health’ <https://www.sanger.ac.uk/>

- Mixture of both externally grant funded *and* ‘core’ – Wellcome – funded projects
- Diverse research questions; fast moving science
- In many cases, use of physical material in order to generate genetic sequences



Programme

Cancer, Ageing and Somatic Mutation

The Cancer, Ageing and Somatic Mutation Programme seeks to provide leadership in data aggregation and informatics innovation, developing high-throughput cellular models ...



Programme

Cellular Genetics

We are focused on using single-cell approaches, so called “cell atlas” technologies and understanding human genetics at the cellular level. The ...



Programme

Human Genetics

The Human Genetics Programme is driving a step-change in our understanding of genetic causes and biological mechanisms of disease susceptibility ...



Programme

Parasites and Microbes

We are using genomics to get at important problems in infectious disease, with a strong desire to translate this into tools ...



Programme

Tree of Life

Investigates the diversity of complex organisms through sequencing and cellular technologies. We generate and use high-quality genome sequences to explore the ...

Sources – use of live animals, material derived from the use of live animals in research

On-site resources



<https://www.sanger.ac.uk/>

The **Research Support Facility** has, and continues to serve the Institute and worldwide community by providing and caring for rodent and aquatic models used for research purposes.

In May 2019, the Sanger Institute made the difficult decision to close the animal facility, driven by its scientific strategy.

Off-site resources

Collaborator/partner led

Supplier

Collection

Primary source

- Use of live animals to generate parasite material
- Mutual collaboration to generate animal tissues/materials
- Commissioned activities to generate animal tissues/materials
- Commercially purchased animal tissues/materials
- Commercially purchased animal *derived* reagents etc.
- Bio-banked animal tissues/materials
- Historically (e.g. >10 years) generated animal tissues/materials

Secondary source

Primary source

Sources – animal (derived) material from outside of the use of animals in research



Current review methods

Institute level: There are two main areas of review when using non-human material in research at the Wellcome Sanger Institute, and we do so to reduce, prevent where possible and mitigate potential 'risk' associated with acquisition and use of materials by our researchers.

- Promote high welfare standards
- Raise awareness
- Support and promote providers in transparency

Resources

AWERB
Internet search
Licensing copies
National legislation
Associations e.g. BIAZA
Organisational assurances
International treaties, frameworks, accords
NC3Rs choosing contractors for animal research
RVCS Code of Professional Conduct
Legal documentation e.g. MTA
Organisational policy
Subject expertise
Facility visits
Direct contact
UK regulators
News items
Evidence of due diligence

Ethical review

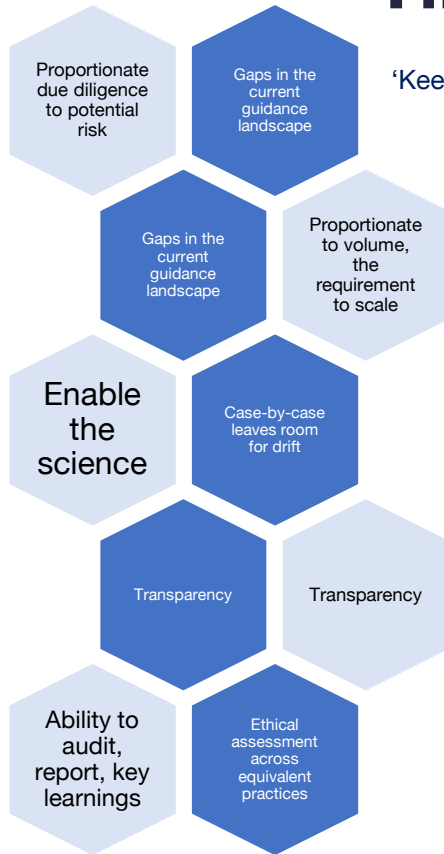
HBA
Source reputation
Source of material
Preferred supplier?
Post-mortem sampling
Purpose of collection
Grant funder requirements
Conservation status of species
Commissioned use of live animals?
Can the material be obtained elsewhere?
Collaborator-led use of live animals?
Conservation status of habitat
Animal husbandry standards
Animal welfare standards
Method of collection
Cultural practices
Supplier reputation
Euthanasia policy
Public interest
Live sampling

Legal review

Restriction on use of data
Restriction on purpose of use
Licensing requirements: collection
Licensing requirements: transfer to third party
Licensing requirements: possession
Licensing requirements: sampling

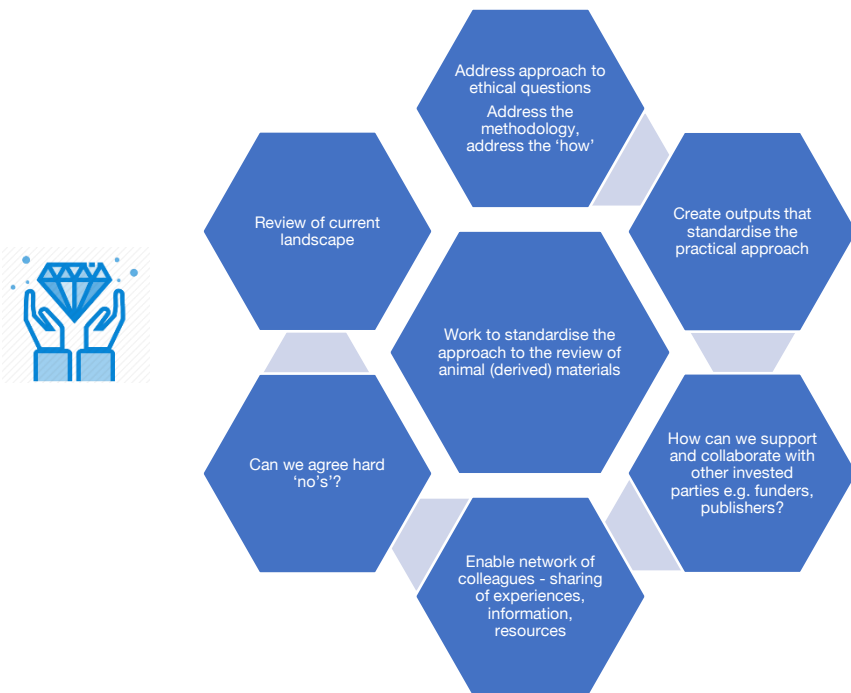
Time for change?

'Keep up with the science, ahead of the science.'



Animal Materials Working Group

A recent initiative to collaborate across organisations with a view to standardise approaches where possible, raise awareness and create 'on the ground' outputs.



Status

- ✓ Brilliant membership spanning scientific and education sectors and experience
- ✓ Embarked on prior to lockdown and recently re-initiated
- ✓ Project scoping underway...

If this is something that you would be interested in participating in, would like to be kept update on or have information that you think may be useful to the aims, please do get in touch.

Email: cm17@sanger.ac.uk

Tel: (01223) 496920



Thank you!
Any questions?